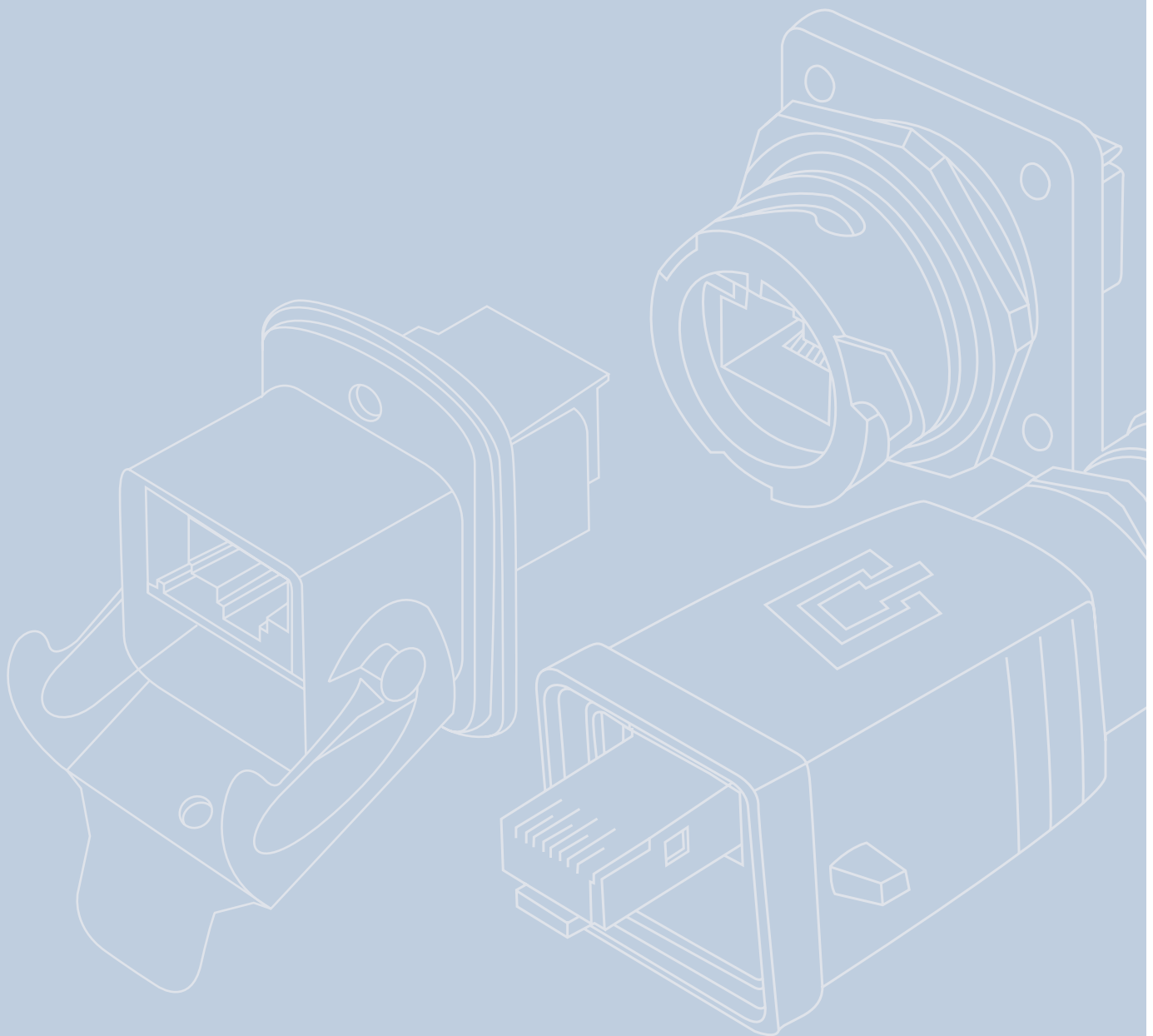
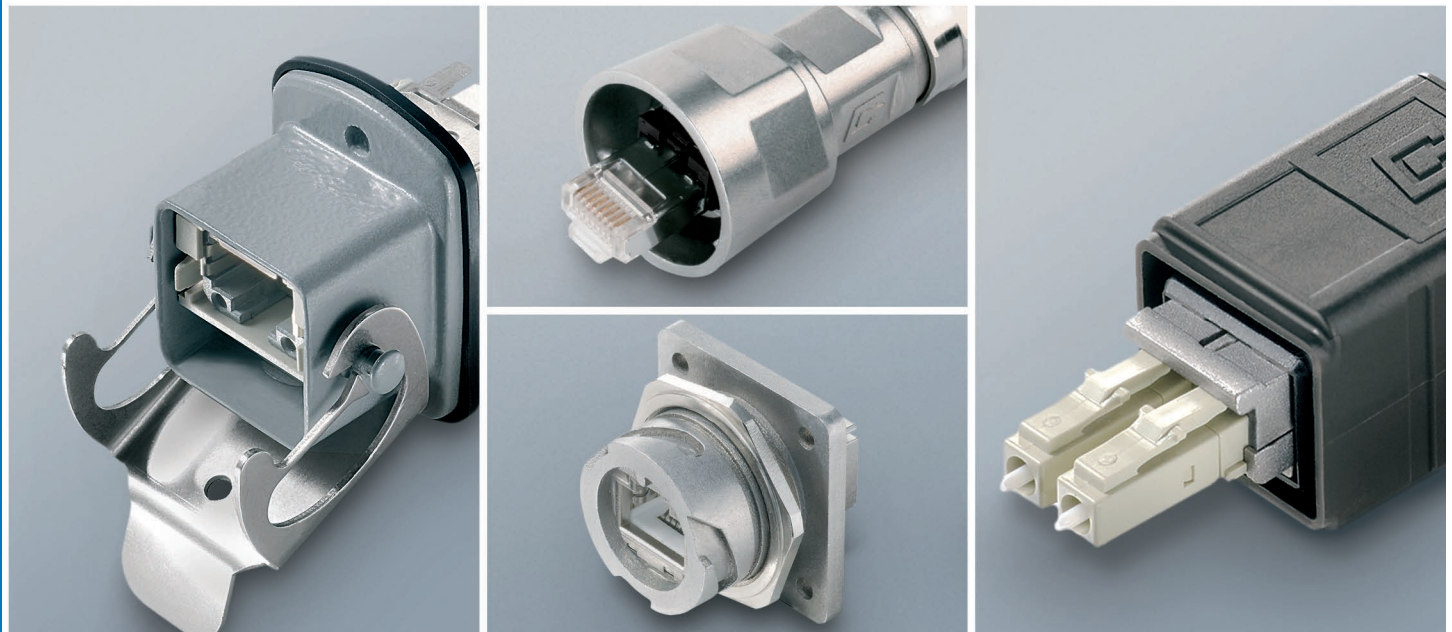


1

Heavy Duty





1

Heavy Duty

1.1	Variant 1	14	1.3	Variant 5	35
1.1.1	RJ45 Plug Sets Variant 1	15	1.3.1	RJ45 Plug Sets Variant 5	36
1.1.2	FO Plug Sets Variant 1	16	1.3.2	RJ45 Plug Inserts Variant 5	36
1.1.3	RJ45 Plug Inserts Variant 1	17	1.3.3	Plug Housings Variant 5	37
1.1.4	FO Plug Inserts 2SC Variant 1	18	1.3.4	Dust Protection Cap for Variant 5	37
1.1.5	FO Plug Inserts LC-Duplex Variant 1	18	1.3.5	RJ45 Bulkhead Sets Variant 5	38
1.1.6	Plug Housings Variant 1	19	1.3.6	RJ45 Bulkhead Inserts Variant 5	38
1.1.7	Protection Cap for Plug Variant 1	19	1.3.7	Bulkhead Housings Variant 5	39
1.1.8	Colour Coding Variant 1	19	1.3.8	Dust Protection Cap for Bulkhead Variant 5	39
1.1.9	RJ45 Bulkhead Sets Variant 1	20	1.3.9	Outlets with Bulkhead Variant 5	40
1.1.10	FO Bulkhead Sets Variant 1	20	1.4	Variant 6	41
1.1.11	RJ45 Bulkhead Inserts Variant 1	21	1.4.1	RJ45 Plug Set Variant 6	42
1.1.12	FO Bulkhead Inserts 2SC/SC-RJ Variant 1	22	1.4.2	Coloured Locking Clasps	42
1.1.13	FO Bulkhead Inserts LC-Duplex Variant 1	22	1.4.3	RJ45 Outlet IP67	43
1.1.14	Bulkhead Housings Variant 1	22	1.4.4	Bulkhead Sets Variant 6	44
1.1.15	Dust Protection Cap for Bulkheads Variant 1	23	1.4.5	Bulkheads IP67 Variant 6	44
1.1.16	Outlets with Bulkhead Variant 1	23	1.4.6	FO Connector 2xSC IP67	46
1.2	Variant 4	25	1.4.7	FO Flange Coupler 2xSC IP67	47
1.2.1	RJ45 Plug Sets Variant 4	26	1.4.8	RJ45 and FO Outlet IP66 Surface Mounting	48
1.2.2	FO Plug Sets Variant 4	26			
1.2.3	RJ45 Plug Inserts Variant 4	27			
1.2.4	FO Plug Inserts 2SC Variant 4	28			
1.2.5	FO Plug Inserts LC-Duplex Variant 4	28			
1.2.6	Plug Housings Variant 4	29			
1.2.7	Protection Cap for Plug Variant 4	29			
1.2.8	Colour Coding Variant 4	29			
1.2.9	RJ45 Bulkhead Sets Variant 4	30			
1.2.10	FO Bulkhead Sets Variant 4	30			
1.2.11	RJ45 Bulkhead Inserts Variant 4	31			
1.2.12	FO Bulkhead Inserts 2SC/SC-RJ Variant 4	32			
1.2.13	FO Bulkhead Inserts LC-Duplex Variant 4	32			
1.2.14	Bulkhead Housings Variant 4	33			
1.2.15	Dust Protection Cap for Bulkheads Variant 4	33			
1.2.16	Outlets with Bulkhead Variant 4	33			

Modern industrial and building wiring envisions linking the office network with the manufacturing network and its subordinate production cells and machinery. The applicable standard for this, ISO/IEC 24702, is intended for situations with a high level of bidirectional traffic between the administration and manufacturing areas whereby real-time transmissions with high security, 100% availability and simultaneous high investment security must all be guaranteed. The increasing interconnection of machinery, equipment and measuring instruments in the production

area using connectors already known from office wiring applications demands that these be adapted to the higher stresses presented by the contamination-prone, rough industrial environment. Aside from a variety of RJ45 IP67 connectors, Telegärtner therefore also offers designs for connecting glass and polymer fibres in order to meet this challenge. Ethernet connectors from Telegärtner give you a decisive advantage since these products are not only gigabit-capable, but their housings are also in compliance with the IEC 61076-3-106 standard.

Type	Norm	Status	Description
RJ45 AWG24	IEC 60603-3-3	Standard	8-way Modular Connector Cat.5e
RJ45 AWG22	IEC 60603-3-3	Standard	8-way Modular Connector Cat.5e
RJ45 AWG24	IEC 60603-3-5	Standard	8-way Modular Connector Cat.6
RJ45 AWG22	IEC 60603-3-5	Standard	8-way Modular Connector Cat.6
SC-RJ	IEC 61754-24	CD	SFF connector, Push-Pull
SC-Duplex	IEC 61754-4	Standard	SC Push-Pull
LC	IEC 61754-20	Standard	SFF connector, latch
ST	IEC 61754-2	Standard	bayonet locking
M12-D	IEC 61076-2-101-A1	passed	M12-4, 4 pole with D-coding
Var. 1	IEC 61076-3-106	passed	Circular bayonet locking
Var. 4	IEC 61076-3-106	passed	Push-pull IP67
Var. 5	IEC 61076-3-106	passed	Locking lever coupling
Var. 6	IEC 61076-3-106	passed	push-pull locking
Var. 14	IEC-PAS 61076-3-117	passed	Push-pull IP67

Type	ISO/IEC 24702	IEC 61918	IEC 61784-5	prEN 50173-1:2006	prEN 50173-3:2006
	FDIS passed generic Cabling Industrial Premises	2CDV Installation Guide Automation Island	CDV Installation Guide Industrial Control	„Generic Cabling Systems - general requirement“	„Generic Cabling Systems - Industrial Premises“
RJ45 AWG24	●	●	●	●	●
RJ45 AWG22	●	●	●	●	●
RJ45 AWG24	●	●	●	●	●
RJ45 AWG22	●	●	●	●	●
SC-RJ	●	●	●	●	●
SC-Duplex	●	●	●	●	●
LC	●	●	●	●	●
ST	●	●	●	●	●
M12-D	●	●	●	●	●
Var. 1	●*	●	●	●	●*
Var. 4	●	●	●	●	●*
Var. 5	●	●	●	●	●
Var. 6	●*	●	●	●	●*
Var. 14	●	●	●	●	●

* reference to IEC 61918

Type	Ethernet TCP/IP	ODVA	PNO AIDA	IAONA	IBS-Club
	Eth. TCP/IP	Ethernet IP	Profinet	Eth. TCP/IP	Interbus RTE
RJ45 AWG24	●	●	●	●	●
RJ45 AWG22	●	●	●	●	●
RJ45 AWG24	●	●	●	●	●
RJ45 AWG22	●	●	●	●	●
SC-RJ	●	●	●	●	●
SC-Duplex	●	●	●	●	●
LC	●	●	●	●	●
ST	●	●	●	●	●
M12-D	●	●	●	●	●
Var. 1	●	●	●	●	●
Var. 4	●	●	●	●	●
Var. 5	●	●	●	●	●
Var. 6	●	●	●	●	●
Var. 14	●	●	●	●	●

1

Heavy Duty

1.1

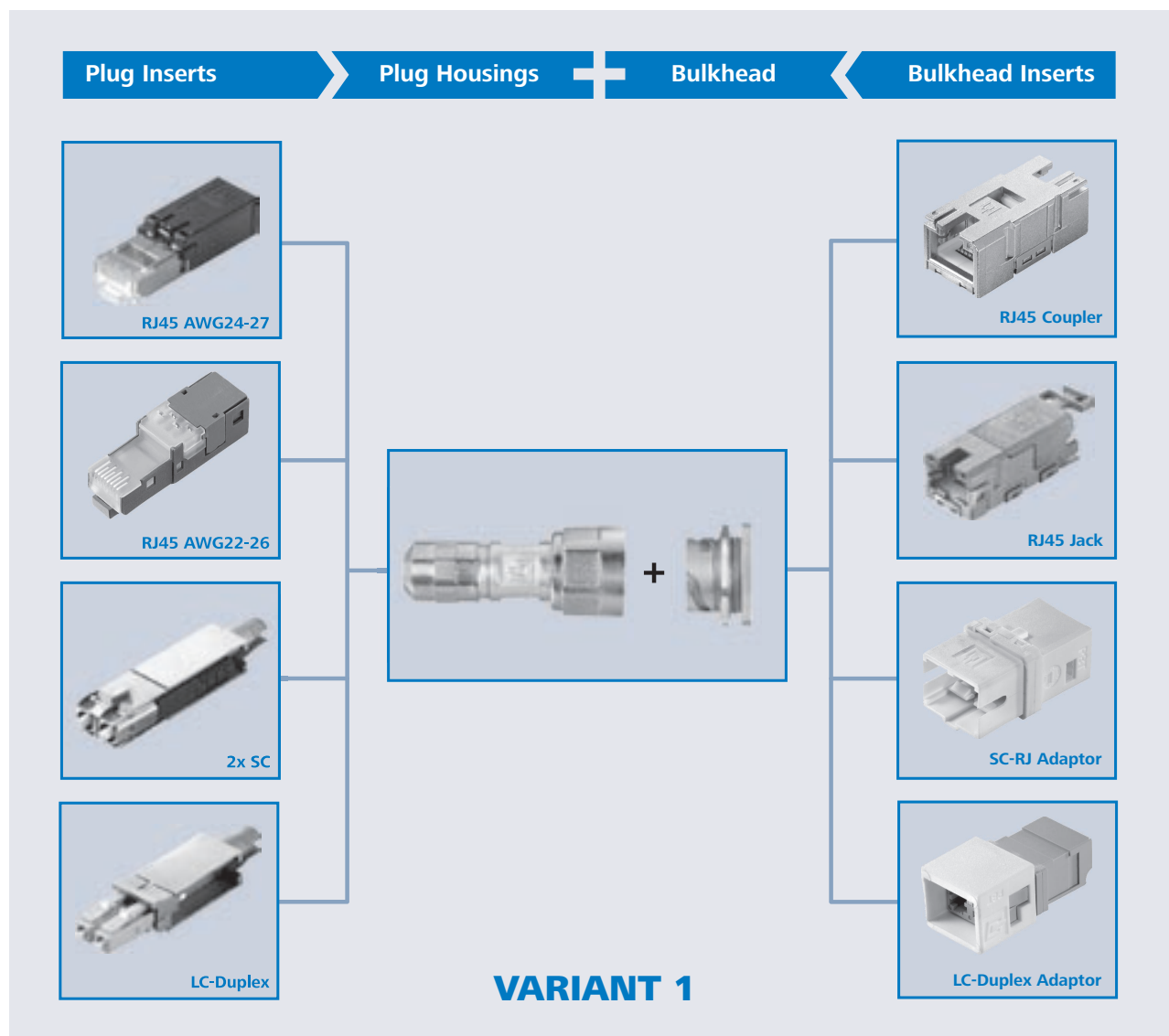
Variant 1

Connectors for modern industrial applications need to be designed in such a way that they simplify processes and cope with faster data transmission. Telegärtner recommends the connectors of Variant 1 for application-neutral wiring of automation machinery (Automation Island, ODVA) acc. IEC 61918 in the robust metal design. The connectors of variant 1 are standardized in the IEC 61076-3-106, designed to meet the demands of harsh industrial environments, guaranteeing IP67 class protection whether mated or unmated (using the IP67 protection

cap). Furthermore, the modular principle - which is used on all connectors with **STEADYTEC**-Technology - allows us to offer a wide range of products. Benefit from maximum flexibility and choose the insert you need! The RJ45 plug and bulkhead inserts stand out due to high power reserves and offer transmission characteristics of category 6. The FO plug and bulkhead inserts are available for GOF and POF-fibres and provide the most suitable solution for every application.

Performance Characteristics

- variant 1 acc. to ISO/IEC 61076-3-106
- protection class IP67
- available with RJ45 Cat.6 or FO insert
- rugged zinc diecast housing
- storage of cables with diameter 5...10 mm
- pre-assembled plugs and set products for simple mounting
- simple Mounting of bulkheads through a central screwed gland or four screws
- with bend protection to prevent cables from being excessively bent
- rubber security strip at the protection cap
- colour codings available
- bay for marking labels



RJ45 Plug Sets Variant 1 | 1.1.1



Order no.	Description	Variant	Solid/Stranded	Housing	Remarks
J80026A0005	STX V1 RJ45 plug set Cat.6	V1	AWG24-27	metal	without bend protection



Order no.	Description	Variant	Solid/Stranded	Housing	Remarks
J80026A0006	STX V1 RJ45 plug set Cat.6	V1	AWG24-27	metal	with bend protection



Order no.	Description	Variant	Solid/Stranded	Housing	Remarks
J80026A0007	STX V1 RJ45 plug set Cat.6	V1	AWG22-26	metal	field assembly, without bend protection



Order no.	Description	Variant	Solid/Stranded	Housing	Remarks
J80026A0008	STX V1 RJ45 plug set Cat.6	V1	AWG22-26	metal	field assembly, with bend protection

1.1.2 | FO Plug Sets Variant 1




Order no.	Description	Variant	Housing	Connector type	Fibre type	Remarks
J88083A0008	STX V1 FO plug set	V1	metal	2SC	Singlemode	without bend protection
J88083A0009	STX V1 FO plug set	V1	metal	2SC	Singlemode	with bend protection
J88083A0006	STX V1 FO plug set	V1	metal	2SC	Multimode	without bend protection
J88083A0007	STX V1 FO plug set	V1	metal	2SC	Multimode	with bend protection
J88083A0010	STX V1 FO plug set	V1	metal	2SC	POF	without bend protection
J88083A0011	STX V1 FO plug set	V1	metal	2SC	POF	with bend protection




Order no.	Description	Variant	Housing	Connector type	Fibre type	Remarks
J88073A0006	STX V1 FO plug set	V1	metal	LC-Duplex	Singlemode	without bend protection
J88073A0007	STX V1 FO plug set	V1	metal	LC-Duplex	Singlemode	with bend protection
J88073A0004	STX V1 FO plug set	V1	metal	LC-Duplex	Multimode	without bend protection
J88073A0005	STX V1 FO plug set	V1	metal	LC-Duplex	Multimode	with bend protection


Technical Data

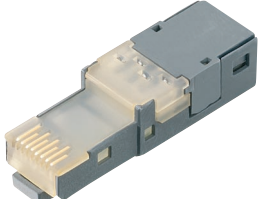
	Plug Insert AWG24-27	Plug Insert AWG22-26
Mechanical Characteristics		
Durability (mating cycles)	>750	>750
Mating Requirements Cu-Conductor diameter: solid	AWG 27/1-24/1	AWG26/1-22/1
Mating Requirements Cu-Conductor diameter: stranded	AWG 27/7-24/7	AWG 26/7-22/7
Core Diameter	0.85 - 1.05 mm	up to 1.6 mm
Overall cable diameter	5 - 7.3 mm	5.5 - 8.5 mm
Shielding contact	360°	360°
Suitable for variant	1,4,5	1,4,5
Climatic Characteristics		
Temperature range	-40° C...80° C	-40° C...80° C
Transmission Characteristics		
Category	Cat.6	Cat.6





Order no.	Description	Solid/Stranded
J80026A0002	STX RJ45 plug insert Cat.6	AWG24-27



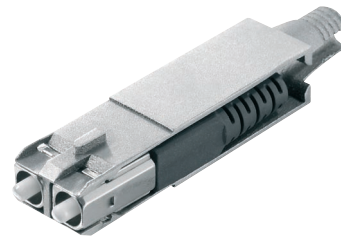


Order no.	Description	Solid/Stranded	Remarks
J80026A0004	STX RJ45 plug insert Cat.6	AWG22-26	field assembly

1.1.4 FO Plug Inserts 2SC Variant 1

Performance Characteristics

- types for Singlemode, Multimode, POF, PCF on request
- ferrule distance: SC-RJ
- rugged zinc-diecast connector retainer
- mating cycles: >500
- suitable for Variant 1 and 4

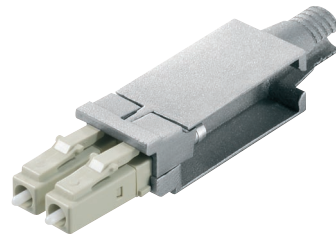


Order no.	Description	Connector type	Fibre type
F80083A0001	STX FO plug insert	2SC	Singlemode
F80083A0000	STX FO plug insert	2SC	Multimode
F80083A0002	STX FO plug insert	2SC	POF

1.1.5 FO Plug Inserts LC-Duplex Variant 1

Performance Characteristics

- types for Singlemode, Multimode
- ferrule distance: LC-Duplex
- rugged zinc-diecast connector retainer
- mating cycles: >500
- suitable for Variant 1 and 4



Order no.	Description	Connector type	Fibre type
F80073A0001	STX FO plug insert	LC-Duplex	Singlemode
F80073A0000	STX FO plug insert	LC-Duplex	Multimode

Plug Housings Variant 1 | 1.1.6



Order no.	Description	Variant	Housing	Remarks
H86010A0000	STX V1 plug housing	V1	metal	without bend protection



Order no.	Description	Variant	Housing	Remarks
H86010B0000	STX V1 plug housing	V1	metal	with bend protection

Protection Cap for Plug Variant 1 | 1.1.7



Order no.	Description	Variant	Remarks
H80030A0000	STX V1 plug protection cap	V1	plastic

Colour Coding Variant 1 | 1.1.8



Order no.	Description	Variant	Colour
B80112A0000	STX colour coding	for V1; V4	white
B80112A0001	STX colour coding	for V1; V4	grey
B80112A0002	STX colour coding	for V1; V4	orange
B80112A0003	STX colour coding	for V1; V4	blue
B80112A0004	STX colour coding	for V1; V4	yellow
B80112A0005	STX colour coding	for V1; V4	green

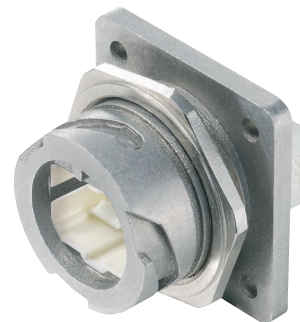
1.1.9 RJ45 Bulkhead Sets Variant 1



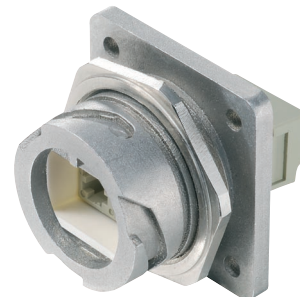
Order no.	Description	Variant	Housing	Insert
J80020A0001	STX V1 bulkhead set	V1	metal	RJ45 coupler Cat.6

Order no.	Description	Variant	Housing	Insert
J80020A0000	STX V1 bulkhead set	V1	metal	RJ45 jack Cat.6

1.1.10 FO Bulkhead Sets Variant 1




Order no.	Description	Variant	Housing	Fibre type	Insert
J88084A0003	STX V1 bulkhead set	V1	metal	Singlemode	2SC/SC-RJ adaptor
J88084A0002	STX V1 bulkhead set	V1	metal	Multimode	2SC/SC-RJ adaptor

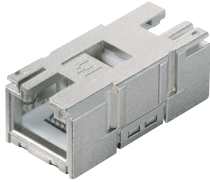


Order no.	Description	Variant	Housing	Fibre type	Insert
J88074A0003	STX V1 bulkhead set	V1	metal	Singlemode	LC-Duplex
J88074A0002	STX V1 bulkhead set	V1	metal	Multimode	LC-Duplex


Technical Data

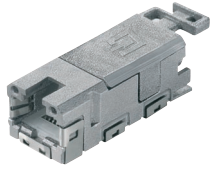
	Bulkhead Insert Jack	Bulkhead Insert Coupler
Mechanical Characteristics		
Mating Requirements Cu-Conductor diameter: solid	AWG 26/1-22/1	-
Mating Requirements Cu-Conductor diameter: stranded	AWG 26/7-22/7	-
Material: Housing	zinc diecast	zinc diecast
Shielding	advanced resistance to vibration and shock by the use of 4 springs at the shroud	advanced resistance to vibration and shock by the use of 4 springs at the shroud
Overall cable diameter	5.5 - 10 mm	-
Colour coding	EIA/TIA A; EIA/TIA B; Profinet	-
Strain relief/shield	separate	-
Design	-	symmetric
Climatic Characteristics		
Temperature range	-40° C...80° C	-40° C...80° C
Transmission Characteristics		
Category	Cat.6 (de-embedded tested)	Cat.6





Order no.	Description
J80029A0010	STX RJ45 coupler Cat.6





Order no.	Description	Colour coding
J80029A0000	STX RJ45 jack Cat.6	EIA/TIA A
J80029A0001	STX RJ45 jack Cat.6	EIA/TIA B
J80029A0002	STX RJ45 jack Cat.6	Profinet

1.1.12 | FO Bulkhead Inserts 2SC/SC-RJ Variant 1

Performance Characteristics

- Types for Singlemode, Multimode, POF, PCF on request
- Sleeve distance: SC-RJ
- Mating cycles: >500
- Suitable for Variant 1 and 4



Order no.	Description	Connector type	Fibre type
F80084A0001	STX FO adaptor	2SC/SC-RJ	Singlemode
F80084A0000	STX FO adaptor	2SC/SC-RJ	Multimode

1.1.13 | FO Bulkhead Inserts LC-Duplex Variant 1

Performance Characteristics

- Types for Singlemode, Multimode
- Sleeve distance: LC-Duplex
- Mating cycles: >500
- Suitable for Variant 1 and 4



Order no.	Description	Connector type	Fibre type
F80074A0001	STX FO adaptor	LC-Duplex	Singlemode
F80074A0000	STX FO adaptor	LC-Duplex	Multimode

1.1.14 | Bulkhead Housings Variant 1



Order no.	Description	Variant	Housing
H86000A0000	STX V1 bulkhead	V1	metal

Dust Protection Cap for Bulkheads Variant 1 | 1.1.15



Order no.	Description	Variant	Remarks
H80030A0004	STX V1 bulkhead protection cap	V1	plastic

Outlets with Bulkhead Variant 1 | 1.1.16



Order no.	Description	Variant	Type	cable feed	Housing	protection class	Dimensions in mm
H82000A0006	STX V1 Surface mount housing	V1	single gang	vertical	metal	IP 67	LxWxH = 75x80x57



Order no.	Description	Variant	Type	cable feed	Housing	protection class	Dimensions in mm
H82000A0007	STX V1 Surface mount housing	V1	double gang	right hand	metal	IP 67	LxWxH = 125x80x57

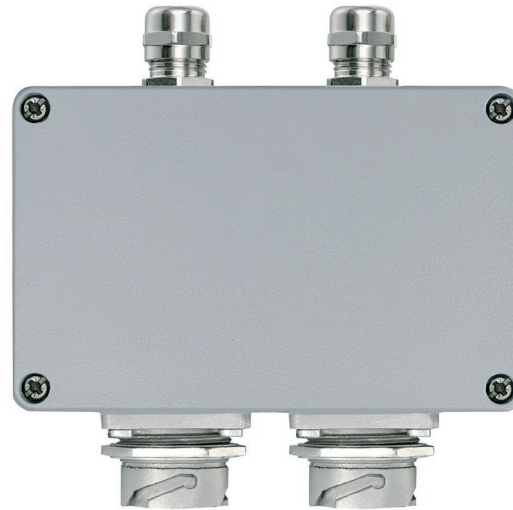
1

Heavy Duty

1.1

Variant 1

1.1.16 Outlets with Bulkhead Variant 1



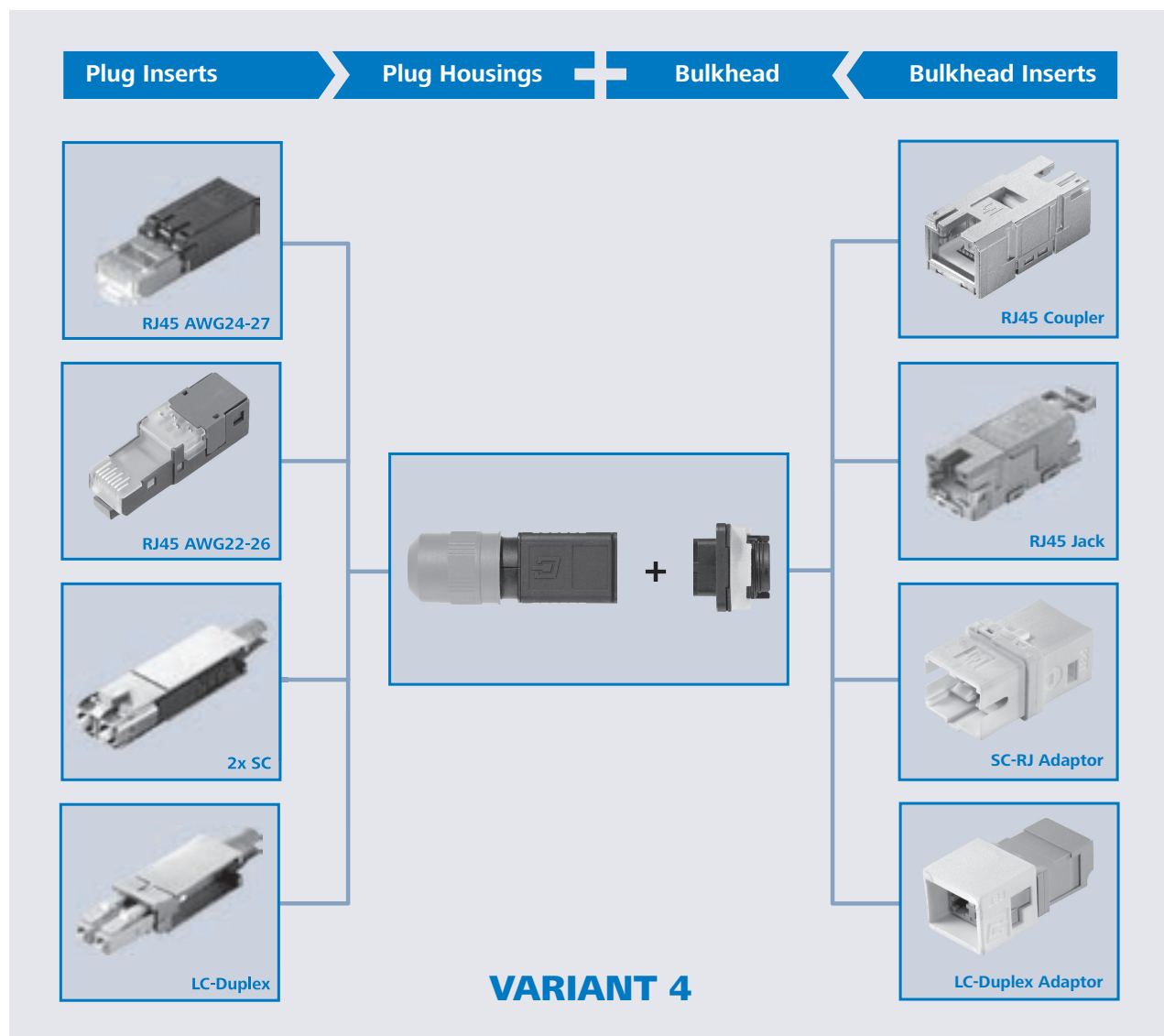
Order no.	Description	Variant	Type	cable feed	Housing	protection class	Dimensions in mm
H82000A0008	STX V1 Surface mount housing	V1	double gang	vertical	metal	IP 67	LxWxH = 125x80x57

The standard for application-neutral wiring in industrial premises ISO/IEC 24702 stipulates the connector of Variant 4. This, extraordinary space saving connector provides a Gigabit-link to the machine while having the same installation dimensions as a 4-way M12 connector. The connectors of variant 4 are standardized in the IEC 61076-3-106, designed to meet the demands of harsh industrial environments, guaranteeing IP67 class protection whether mated or unmated (using the IP67 protection

cap). Furthermore, the modular principle - which is used on all connectors with **STEADYTEC**-Technology - allows us to offer a wide range of products. Benefit from maximum flexibility and choose the insert you need! The RJ45 plug and bulkhead inserts stand out due to high power reserves and offer transmission characteristics of category 6. The FO plug and bulkhead inserts are available for GOF and POF-fibres and offer the most suitable solution for every application.

Performance Characteristics

- variant 4 acc. to ISO/IEC 61076-3-106
- protection class IP67
- available with RJ45 Cat.6 or FO insert
- storage of cables with diameter 5...10 mm
- pre-assembled plugs and set products for simple mounting
- simple Mounting of bulkheads through a central screwed gland or four screws
- rugged PA-Housing
- with bend protection to prevent cables from being excessively bent
- rubber security strip at the protection cap
- colour codings available
- bay for marking labels



1.2.1 RJ45 Plug Sets Variant 4



Order no.	Description	Variant	Solid/Stranded	Housing	Remarks
J80026A0013	STX V4 RJ45 plug set Cat.6	V4	AWG24-27	plastic	without bend protection
J80026A0014	STX V4 RJ45 plug set Cat.6	V4	AWG24-27	plastic	with bend protection



Order no.	Description	Variant	Solid/Stranded	Housing	Remarks
J80026A0015	STX V4 RJ45 plug set Cat.6	V4	AWG22-26	plastic	without bend protection, field assembly
J80026A0016	STX V4 RJ45 plug set Cat.6	V4	AWG22-26	plastic	with bend protection, field assembly

1.2.2 FO Plug Sets Variant 4



Order no.	Description	Variant	Housing	Connector type	Fibre type	Remarks
J88083A0002	STX V4 FO plug set	V4	plastic	2SC	Singlemode	without bend protection
J88083A0003	STX V4 FO plug set	V4	plastic	2SC	Singlemode	with bend protection
J88083A0000	STX V4 FO plug set	V4	plastic	2SC	Multimode	without bend protection
J88083A0001	STX V4 FO plug set	V4	plastic	2SC	Multimode	with bend protection
J88083A0004	STX V4 FO plug set	V4	plastic	2SC	POF	without bend protection
J88083A0005	STX V4 FO plug set	V4	plastic	2SC	POF	with bend protection



Order no.	Description	Variant	Housing	Connector type	Fibre type	Remarks
J88073A0002	STX V4 FO plug set	V4	plastic	LC-Duplex	Singlemode	without bend protection
J88073A0003	STX V4 FO plug set	V4	plastic	LC-Duplex	Singlemode	with bend protection
J88073A0000	STX V4 FO plug set	V4	plastic	LC-Duplex	Multimode	without bend protection
J88073A0001	STX V4 FO plug set	V4	plastic	LC-Duplex	Multimode	with bend protection

RJ45 Plug Inserts Variant 4 | 1.2.3

Technical Data

	Plug Insert AWG24-27	Plug Insert AWG22-26
Mechanical Characteristics		
Durability (mating cycles)	>750	>750
Mating Requirements Cu-Conductor diameter: solid	AWG 27/1-24/1	AWG 26/1-22/1
Mating Requirements Cu-Conductor diameter: stranded	AWG 27/7-24/7	AWG 26/7-22/7
Core Diameter	0.85 - 1.05 mm	up to 1.6 mm
Overall cable diameter	5 - 7.3 mm	5.5 - 8.5 mm
Shielding contact	360°	360°
Suitable for variant	1,4,5	1,4,5
Climatic Characteristics		
Temperature range	-40° C...80° C	-40° C...80° C
Transmission Characteristics		
Category	Cat.6	Cat.6



Order no.	Description	Solid/Stranded
J80026A0002	STX RJ45 plug insert Cat.6	AWG24-27

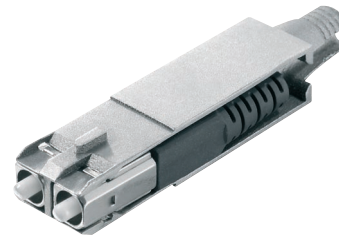


Order no.	Description	Solid/Stranded	Remarks
J80026A0004	STX RJ45 plug insert Cat.6	AWG22-26	field assembly

1.2.4 FO Plug Inserts 2SC Variant 4

Performance Characteristics

- types for Singlemode, Multimode, POF, PCF on request
- ferrule distance: SC-RJ
- rugged zinc-diecast connector retainer
- mating cycles: >500
- suitable for Variant 1 and 4

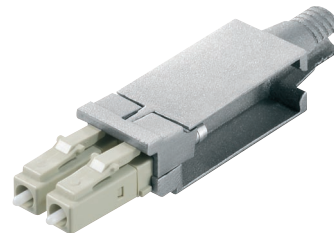


Order no.	Description	Connector type	Fibre type
F80083A0001	STX FO plug insert	2SC	Singlemode
F80083A0000	STX FO plug insert	2SC	Multimode
F80083A0002	STX FO plug insert	2SC	POF

1.2.5 FO Plug Inserts LC-Duplex Variant 4

Performance Characteristics

- types for Singlemode, Multimode
- ferrule distance: LC-Duplex
- rugged zinc-diecast connector retainer
- mating cycles: >500
- suitable for Variant 1 and 4

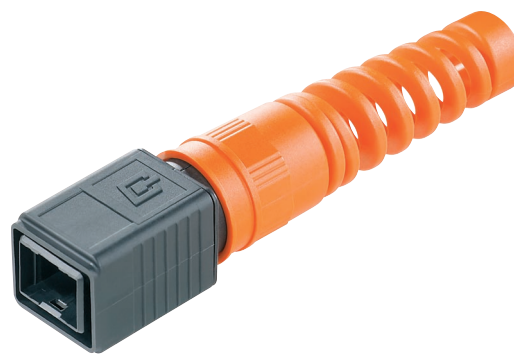


Order no.	Description	Connector type	Fibre type
F80073A0001	STX FO plug insert	LC-Duplex	Singlemode
F80073A0000	STX FO plug insert	LC-Duplex	Multimode

Plug Housings Variant 4 | 1.2.6



Order no.	Description	Variant	Housing	Remarks
H86011A0011	STX V4 plug housing	V4	plastic	without bend protection



Order no.	Description	Variant	Housing	Remarks
H86011B0011	STX V4 plug housing	V4	plastic	with bend protection

Dust Protection Caps for Plugs Variant 4 | 1.2.7



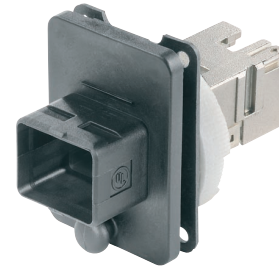
Order no.	Description	Variant	Remarks
H80030A0001	STX V4 plug protection cap	V4	plastic

Colour Coding Variant 4 | 1.2.8

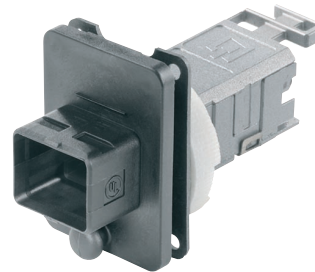


Order no.	Description	Variant	Colour
B80112A0000	STX colour coding	for V1; V4	white
B80112A0001	STX colour coding	for V1; V4	grey
B80112A0002	STX colour coding	for V1; V4	orange
B80112A0003	STX colour coding	for V1; V4	blue
B80112A0004	STX colour coding	for V1; V4	yellow
B80112A0005	STX colour coding	for V1; V4	green

1.2.9 RJ45 Bulkhead Sets Variant 4

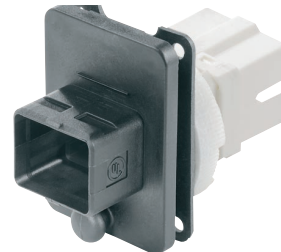


Order no.	Description	Variant	Insert
J80020A0005	STX V4 bulkhead set	V4	RJ45 coupler Cat.6



Order no.	Description	Variant	Insert
J80020A0004	STX V4 bulkhead set	V4	RJ45 jack Cat.6

1.2.10 FO Bulkhead Sets Variant 4



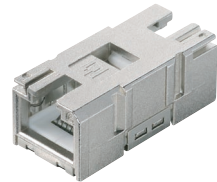

Order no.	Description	Variant	Fibre type	Insert
J88084A0001	STX V4 bulkhead set	V4	Singlemode	2SC/SC-RJ adaptor
J88084A0000	STX V4 bulkhead set	V4	Multimode	2SC/SC-RJ adaptor



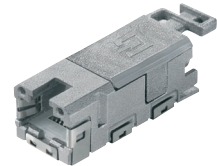

Order no.	Description	Variant	Fibre type	Insert
J88074A0001	STX V4 bulkhead set	V4	Singlemode	LC-Duplex adaptor
J88074A0000	STX V4 bulkhead set	V4	Multimode	LC-Duplex adaptor

Technical Data

	Bulkhead Insert Jack	Bulkhead Insert Coupler
Mechanical Characteristics		
Mating Requirements Cu-Conductor diameter: solid	AWG 26/1-22/1	-
Mating Requirements Cu-Conductor diameter: stranded	AWG 26/7-22/7	-
Material: Housing	zinc diecast	zinc diecast
Shielding	advanced resistance to vibration and shock by the use of 4 springs at the shroud	advanced resistance to vibration and shock by the use of 4 springs at the shroud
Overall cable diameter	5.5 - 10 mm	-
Colour coding	EIA/TIA A; EIA/TIA B; Profinet	-
strain relief/shield	separate	-
Design	-	symmetric
Climatic Characteristics		
Temperature range	-40° C...80° C	-40° C...80° C
Transmission Characteristics		
Category	Cat.6 (de-embedded tested)	Cat.6

Order no.	Description
J80029A0010	STX RJ45 coupler Cat.6

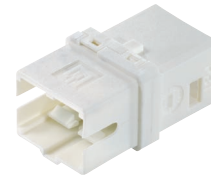



Order no.	Description	Colour coding
J80029A0000	STX RJ45 jack Cat.6	EIA/TIA A
J80029A0001	STX RJ45 jack Cat.6	EIA/TIA B
J80029A0002	STX RJ45 jack Cat.6	Profinet

1.2.12 FO Bulkhead Inserts 2SC/SC-RJ Variant 4

Performance Characteristics

- types for Singlemode, Multimode, POF, PCF on request
- sleeve distance: SC-RJ
- mating cycles: >500
- suitable for Variant 1 and 4



Order no.	Description	Connector type	Fibre type
F80084A0001	STX FO adaptor	2SC/SC-RJ	Singlemode
F80084A0000	STX FO adaptor	2SC/SC-RJ	Multimode

1.2.13 FO Bulkhead Inserts LC-Duplex Variant 4

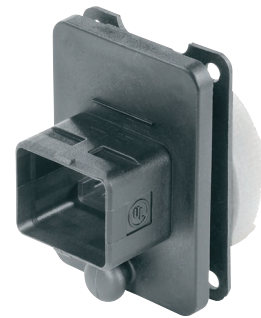
Performance Characteristics

- types for Singlemode, Multimode
- sleeve distance: LC-Duplex
- mating cycles: >500
- suitable for Variant 1 and 4



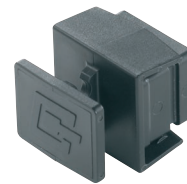
Order no.	Description	Connector type	Fibre type
F80074A0001	STX FO adaptor	LC-Duplex	Singlemode
F80074A0000	STX FO adaptor	LC-Duplex	Multimode

Bulkhead Housings Variant 4 | 1.2.14



Order no.	Description	Variant	Housing
H86000A0002	STX V4 bulkhead	V4	plastic

Dust Protection Cap for Bulkhead Variant 4 | 1.2.15



Order no.	Description	Variant	Remarks
H80030A0005	STX V4 bulkhead protection cap	V4	plastic

Outlets with Bulkhead Variant 4 | 1.2.16



Order no.	Description	Variant	Type	cable feed	Housing	protection class	Dimensions in mm
H82000A0000	STX V4 Surface mount housing	V4	single gang	vertical	metal	IP 67	LxWxH= 75x80x57

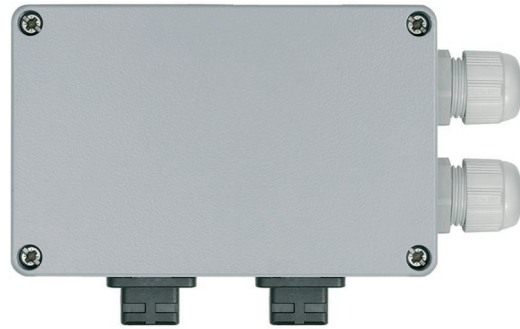
1

Heavy Duty

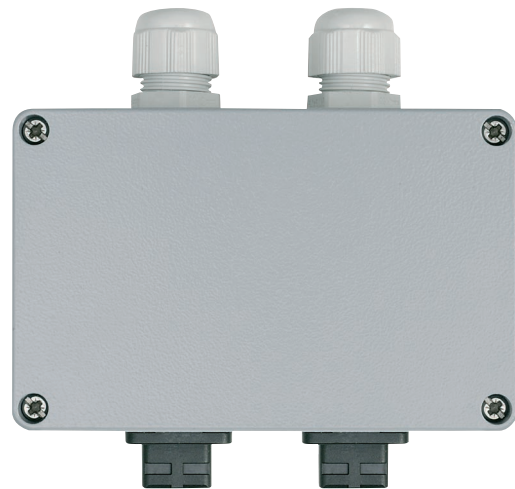
1.2

Variant 4

1.2.16 | Outlets with Bulkhead Variant 4



Order no.	Description	Variant	Type	cable feed	Housing	protection class	Dimensions in mm
H82000A0001	STX V4 Surface mount housing	V4	double gang	right hand	metal	IP 67	LxWxH= 125x80x57



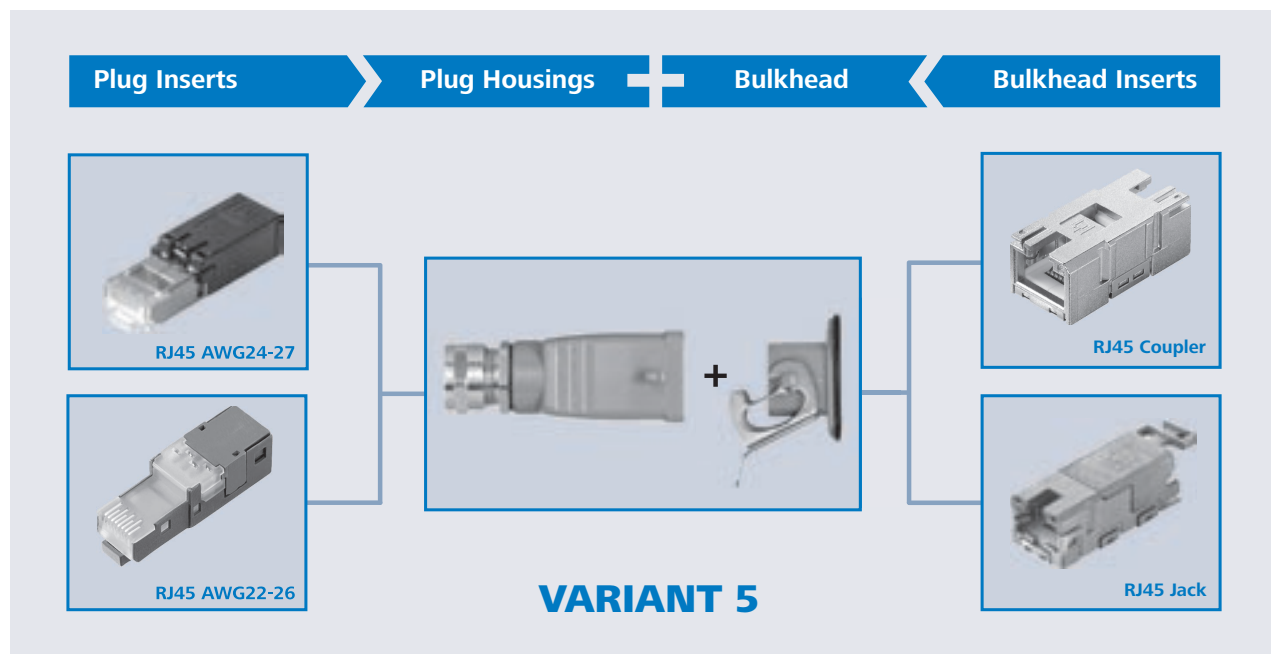
Order no.	Description	Variant	Type	cable feed	Housing	protection	Dimensions in mm
H82000A0002	STX V4 Surface mount housing	V4	double gang	vertical	metal	IP 67	LxWxH= 125x80x57

The Connectors of Variant 5 (Heavy Duty Connector), mostly common from the railway supply industry, wind power and mechanical engineering feature a secure and easy locking using a bail. The connectors of variant 5 are standardized in the IEC 61076-3-106, designed to meet the demands of harsh industrial environments, guaranteeing IP67 class protection whether mated or unmated (using

the IP67 protection cap). Furthermore, the modular principle - which is used on all connectors with **STEADYTEC**-Technology - allows us to offer a wide range of products. Benefit from maximum flexibility and choose the insert you need! The RJ45 plug and bulkhead inserts stand out due to high power reserves and offer transmission characteristics of category 6.

Performance Characteristics

- variant 5 acc. to ISO/IEC 61076-3-106
- protection class IP67
- rugged aluminium diecast housing
- storage of cables with diameter 6...12 mm
- pre-assembled plugs and set products for simple mounting
- simple Mounting of bulkheads with 2 screws
- rubber security strip at the protection cap



1.3.1 RJ45 Plug Sets Variant 5



Order no.	Description	Variants	Solid/Stranded	Housing
J80026A0017	STX V5 RJ45 plug set Cat.6	V5	AWG24-27	aluminium diecast





Order no.	Description	Variants	Solid/Stranded	Housing	Remarks
J80026A0018	STX V5 RJ45 plug set Cat.6	V5	AWG22-26	aluminium diecast	field assembly

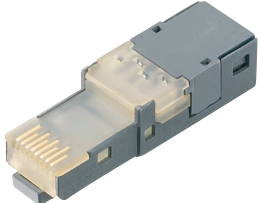

1.3.2 RJ45 Plug Inserts Variant 5

Technical Data

	Plug Insert AWG24-27	Plug Insert AWG22-26
Mechanical Characteristics		
Durability (mating cycles)	>750	>750
Mating Requirements Cu-Conductor diameter: solid	AWG 27/1-24/1	AWG 26/1-22/1
Mating Requirements Cu-Conductor diameter: stranded	AWG 27/7-24/7	AWG 26/7-22/7
Core Diameter	0.85 - 1.05 mm	up to 1.6 mm
Overall cable diameter	5 - 7.3 mm	5.5 - 8.5 mm
Shielding	360°	360°
Suitable for variant	1,4,5	1,4,5
Climatic Characteristics		
Temperature range	-40° C...80° C	-40° C...80° C
Transmission Characteristics		
Category	Cat.6	Cat.6






Order no.	Description	Solid/Stranded
J80026A0002	STX RJ45 plug insert Cat.6	AWG24-27

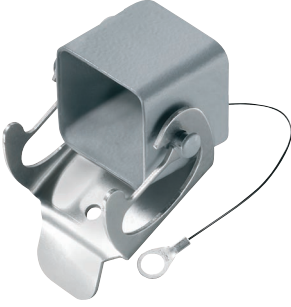

Order no.	Description	Solid/Stranded	Remarks
J80026A0004	STX RJ45 plug insert Cat.6	AWG22-26	field assembly

Plug Housings Variant 5 | 1.3.3

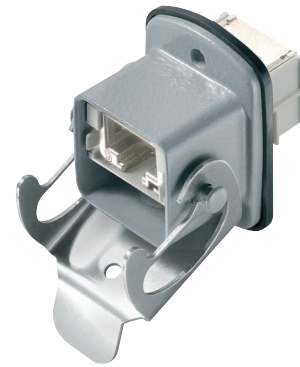
Order no.	Description	Variant	Housing
H86010A0001	STX V5 plug housing	V5	aluminium diecast

Dust Protection Cap for Plugs Variant 5 | 1.3.4

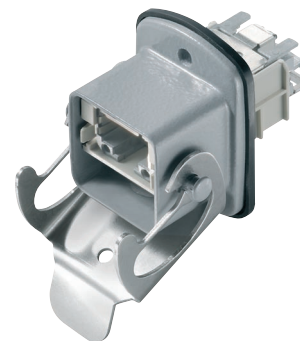



Order no.	Description	Variant	Housing
H80030A0002	STX V5 plug protection cap	V5	aluminium diecast

1.3.5 RJ45 Bulkhead Sets Variant 5



Order no.	Description	Variant	Insert	Housing
J80020A0007	STX V5 bulkhead set	V5	RJ45 coupler Cat.6	aluminium diecast

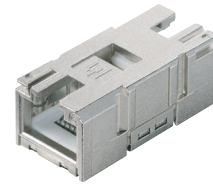


Order no.	Description	Variant	Insert	Housing
J80020A0006	STX V5 bulkhead set	V5	RJ45 jack Cat.6	aluminium diecast

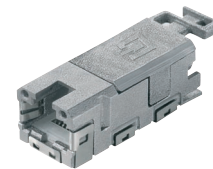
1.3.6 RJ45 Bulkhead Inserts Variant 5

Technical Data

	Bulkhead Inserts Jack	Bulkhead Inserts Coupler
Mechanical Characteristics		
Mating Requirements Cu-Conductor diameter: solid	AWG 26/1-22/1	-
Mating Requirements Cu-Conductor diameter: stranded	AWG26/7-22/7	-
Material: Housing	zinc diecast	zinc diecast
Shielding	advanced resistance to vibration and shock by the use of 4 springs at the shroud	advanced resistance to vibration and shock by the use of 4 springs at the shroud
Overall cable diameter	5.5 - 10 mm	-
Colour coding	EIA/TIA A; EIA/TIA B; Profinet	-
Strain relief/shield	separate	-
Design	-	symmetric
Climatic Characteristics		
Temperature range	-40° C...80° C	-40° C...80° C
Transmission Characteristics		
Category	Cat.6 (de-embedded tested)	Cat.6

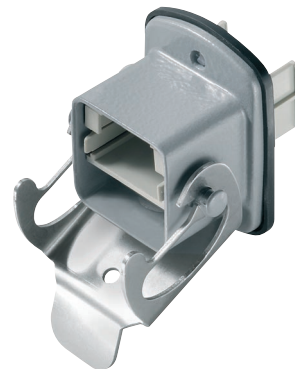


Order no.	Description
J80029A0010	STX RJ45 coupler Cat.6



Order no.	Description	Colour coding
J80029A0000	STX RJ45 jack Cat.6	EIA/TIA A
J80029A0001	STX RJ45 jack Cat.6	EIA/TIA B
J80029A0002	STX RJ45 jack Cat.6	Profinet

Bulkhead Housings Variant 5 | 1.3.7



Order no.	Description	Variant	Housing
H86000A0003	STX V5 bulkhead	V5	aluminium diecast

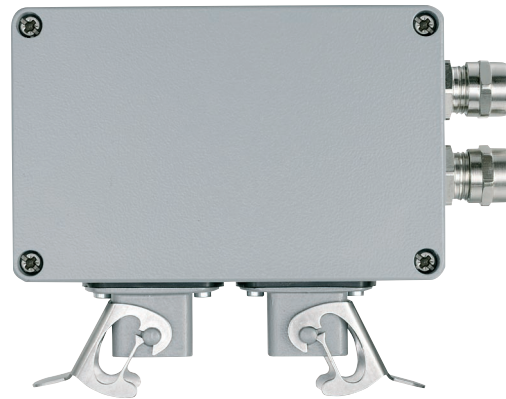
Dust Protection Cap for Bulkhead Variant 5 | 1.3.8

Order no.	Description	Variant	Housing
H80030A0006	STX V5 bulkhead protection cap	V5	aluminium diecast

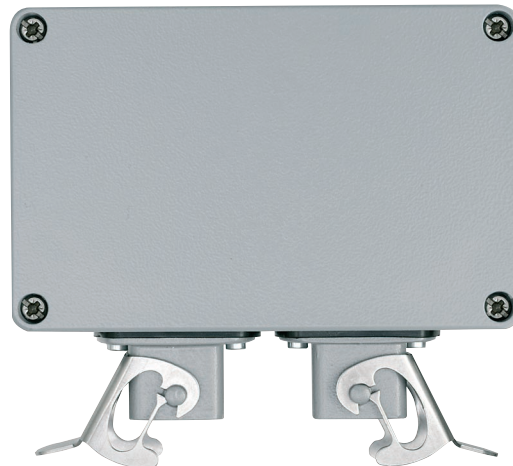
1.3.9 | Outlets with Bulkhead Variant 5



Order no.	Description	Variant	Type	cable feed	Housing	protection class	Dimensions in mm
H82000A0003	STX V5 Surface mount housing	V5	single gang	vertical	metal	IP 67	LxWxH= 75x80x57



Order no.	Description	Variant	Type	cable feed	Housing	protection class	Dimensions in mm
H82000A0004	STX V5 Surface mount housing	V5	double gang	right hand	metal	IP 67	LxWxH= 125x80x57



Order no.	Description	Variant	Type	cable feed	Housing	protection class	Dimensions in mm
H82000A0005	STX V5 Surface mount housing	V5	double gang	vertical	metal	IP 67	LxWxH= 125x80x57

The connectors of variant 6 are standardized in the IEC 61076-3-106, designed to meet the demands of rugged, industrial environments, guaranteeing IP67 protection when mated. The TO features a non-detachable cover ensuring protection class IP67. The locking clasps allow easy, tool-less opening as well as a secure locking with

IP67. The locking clasps are available in different colours and offer protection against unintended loosening. The RJ45 Connector meets the specifications for Category 6 acc. to ISO/IEC 60603-7-5. The metal, fully-shielded RJ45 modules in the TO and the also available bulkhead provide a firm data transmission.

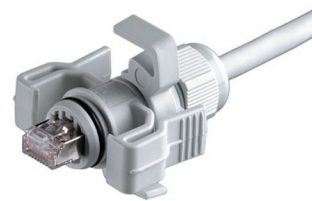
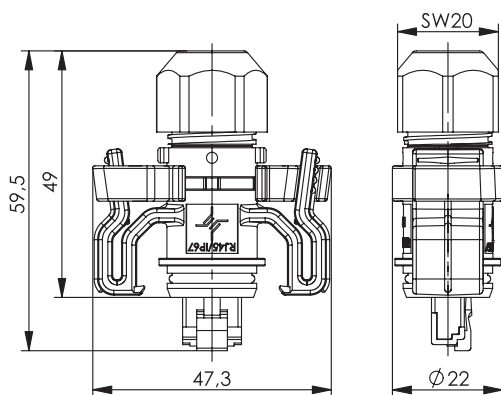
Technical Data

	RJ45 Plug IP67	RJ45 Outlet IP67
Mechanical Characteristics		
Insertion force	≤ 100 N	≤ 100 N
Durability (mating cycles)	≥ 750	≥ 750
Material: Contacts	Phosphor Bronze	Bronze CuSn9P H14
Material: Contact finish	Ni2.54Au0.8	NiAu
Material: Housing	PA6 UL94 V0	PA6 UL94 V0
Material: Cable Gland	PA6 UL94 V0	PA6 UL94 V0
Material: Connector Housing	PC UL94 V0	-
Material: Seal	CR Neoprene	CR
Material: O-ring	HNBR 70 Shore A	NBR 70
Material: Shielding housing	0.5 mm brass, 2 µm Ni	nickel-plated ZN
Mating Requirements Cu-Conductor diameter: solid	Ø 0.36 - 0.51 mm (AWG27/1-24/1)	Ø 0.4 - 0.6 mm (AWG26-22)
Mating Requirements Cu-Conductor diameter: stranded	Ø 0.46 - 0.61 mm (AWG27/7-24/7)	Cu-stranded (AWG26/7)
Mating Requirements: Displacement Contact	-	reusable for AWG22, 23 and 24 when using conductors of same or larger cross-sectional area
Mating Requirements: core diameter	Ø 0.85 - 1.02 mm	Ø 0.7 - 1.4 mm
Mating Requirements: overall cable diameter	Ø 5.5 - 6.2 mm	Ø 5 - 10 mm
Climatic Characteristics		
Tested / classified in accordance with DIN IEC 60068-1	25/070/21	25/070/21
Electrical Characteristics		
Contact resistance	≤ 20 mΩ	≤ 20 mΩ
Insulation resistance	≥ 500 MΩ	≥ 500 MΩ
Voltage proof: contact-contact	≥ 1000 V	≥ 1000 V
Voltage proof: contact-shield	≥ 1500 V	≥ 1500 V
Working current at 50° C	1 A	1 A
Transmission Characteristics		
Interference proof	EN50082-2	EN50082-2
Emission proof	EN50081-2	EN50081-2
Category	Cat.6 acc. to DIN EN 60603-7-5	Cat.6 acc. to DIN EN 60603-7-5
Standards		
IEC 61076-3-106 Variant 6	Connector for electronic equipments part 3 - 106: 8-way connectors for industrial requirements	Connector for electronic equipments part 3 - 106: 8-way connectors for industrial requirements
IEC 60529	Degree of protection by housing (IP code)	Degree of protection by housing (IP code)
DIN EN 60603-7-5	Connector for electronic equipments part 7-5: detail specification for 8-way shielded, free and fixed connectors, for data transmission with frequencies up to 250 MHz	Connector for electronic equipments part 7-5: detail specification for 8-way shielded, free and fixed connectors, for data transmission with frequencies up to 250 MHz

1.4.1 RJ45 Plug Set Variant 6

Performance Characteristics

- conforms to Cat.6 in accordance with DIN EN 60603-7-5
- 8-way contact for Gigabit-Ethernet
- locking clasp to prevent accidental detachment
- optional accessory: colour-coding of the patch cords by using different coloured locking clasps
- locking clasps can be fitted after installation
- 360° shield connection
- meets requirements of EN 50022
- inner and outer conductor crimped in one single operation using the profi crimping tool N00001A0002
- life of crimping tool: ≥ 10.000 crimpings
- supplied with insert for wire management, which does not require wire being cut to exact length



Order no.	Short name	Remarks	Colour
J00026A0150	RJ45 Plug IP67	Fire rating UL94 V0	

1.4.2 Coloured Locking Clasps



Order no.	Short name	Remarks	Colour
B00073A0001	Locking clasp RJ45 connector IP67	Fire rating UL94 V0	grey
B00073B0001	Locking clasp RJ45 connector IP67	Fire rating UL94 V0	red
B00073C0001	Locking clasp RJ45 connector IP67	Fire rating UL94 V0	blue
B00073D0001	Locking clasp RJ45 connector IP67	Fire rating UL94 V0	yellow
B00073E0001	Locking clasp RJ45 connector IP67	Fire rating UL94 V0	green

Performance Characteristics

- conforms to Cat.6 in accordance with DIN EN 60603-7-5
- fully shielded module
- large surface 360° screen connection
- meets requirements of EN 50022
- simple, time-saving assembly
- surface-mount, side-by-side installation possible
- easily opened, re-usable modules
- non-detachable cover ensures protection class IP67 seal (unmated)
- IP67 when mated
- user-friendly, with socket angled to the mounting surface
- mating face in accordance with IEC61076-3-106, Variant 6
- mating face mountable in two directions set at 90° to each other
- can be used together with standard RJ45 plugs (no IP protection)

Order no.	Short name	Remarks
J00020A0436	RJ45 outlet IP67 AP Cat.6	Fire rating UL94 V0

Order no.	Short name	Remarks
J00020A0437	RJ45 free outlet IP67 Cat.6	Fire rating UL94 V0

1.4.4 Bulkhead Sets Variant 6

Order no.	Short name	Remarks
J00020A0480	Bulkhead IP67 with USB-Keystone Type A, f-f	with mounting set
J00020A0481	Bulkhead IP67 with AMJ Module K Cat.6+	with mounting set
J00020A0483	Bulkhead IP67 with AMJ Coupler K Cat.6	with mounting set
J00020A0482	Bulkhead IP67 with AMJ Coupler K Cat.5e	with mounting set

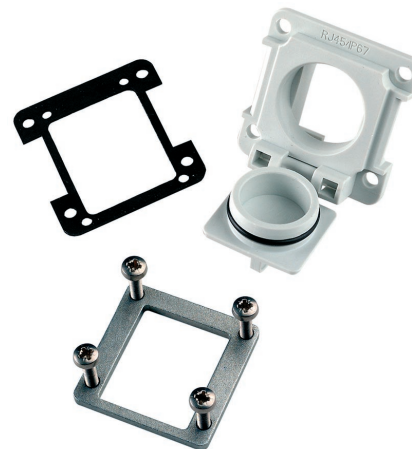
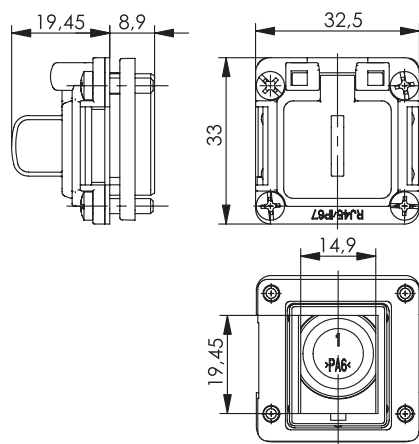
1.4.5 Bulkheads IP67 Variant 6

For direct connection to the exterior device housing, Telegärtner offers a flange version for Cat. 6 and Cat. 5e modules and coupler. These components expand the existing line of Telegärtner protection class IP67 „Industrial Ethernet“ connectors. They are optionally available with an installation set which offers professional, time-saving and simple flange installation. The zinc die-cast frame, equip-

ped with M3 threaded holes is screwed to the opposite side of the installation flange on the installation surface (screws are included in the delivery). This creates a tight and secure fit, with IP67 protection class. The device can be made operational by simply snapping in the modules required. No tooling is necessary.

Performance Characteristics

- non-detachable cover ensures protection class IP67 seal (unmated)
- with the connector plugged in, IP67 protection is provided by the industrial RJ45 plug
- connection of commercially available RJ45 plugs is possible (IP20 protection)
- tool-free mounting (snap-in) of the RJ45 Cat.5e and Cat.6 modules
- simple, time-saving assembly
- little space required for high packing density
- RJ45 mounting flange is perfectly fitted on the mounting surface



Order no.	Short name	Remarks
J00029A0040	RJ45 Mounting Flanges IP67 Industrie with mounting set	for AMJ Modules/Coupler

Order no.	Short name	Remarks
J00029A0042	RJ45 mounting flange IP67 industry without mounting set	for AMJ Modules/Coupler

Montageausschnitt
faceplate cutout

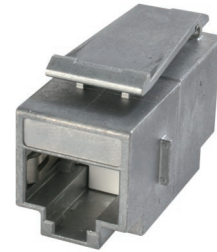
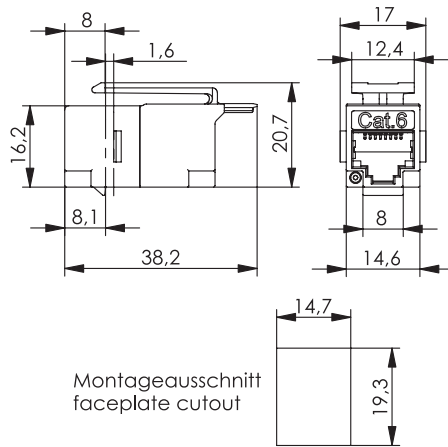
Order no.	Short name
J00029A0039	Mounting set for mounting flange IP67 industry (J00029A0042)

Montageausschnitt
faceplate cutout

Order no.	Short name	Remarks
J00029K0036	AMJ Module K Cat.6+	tool-free connectivity, suitable for RJ11/12 plugs



1.4.5 Bulkheads IP67 Variant 6



Order no.	Short name	Remarks
J00029A0061	AMJ Coupler K Cat.6, f-f	suitable for RJ11/12 plugs
J00029K0051	AMJ Coupler K Cat.5e, f-f	suitable for RJ11/12 plugs

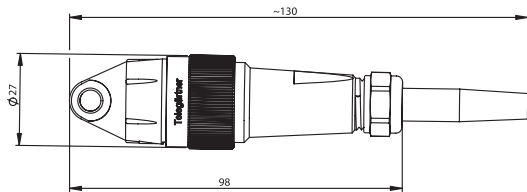
1.4.6 FO Connector 2xSC IP67

For Applications with long transmission lines, high EMI exposure or potentially explosive atmospheres FO connectors with protection class IP67 are indispensable. Telegärtner's FO connector itself consists of bulkhead with a 2SC adaptor and a Duplex plug and is available for GOF and POF fibres. To withstand the rough conditions the robust SC mating face has been integrated into a non-crush metal housing; the spring-loaded protective sleeve ensures optimum protection of the fibre end faces. The connector can

be terminated on-site with a standard SC assembly tool set; a crimp sleeve serves as strain relief and the connector sealed by a cable gland. A screwed, captive cap serves as pulling eye as well as for protection when not connected. The flange mounting outlet is sealed by a protective swivel lid. The connection interface is polarization-proof and the adaptor housing can additionally be mounted in 4x90° positions.

Performance Characteristics

- insertion loss with fibres 9/125: max. 0,5 dB
- insertion loss with fibres 50/125: max. 0,4 dB
- UV-resistant plastic, fire rating UL94 V0
- polarization-proof connector interface 2xSC with 2.5 mm ferrules and spacing as „SC-RJ“ (EN 50377-6-2)
- robust screw coupling with metal fixing nut
- colour coding: Multimode = grey, Singlemode = blue
- protection class IP67 when not connected, with screwed, captive protective cap with pulling eyelet
- spring-loaded sleeve ensures optimum protection of the fibre face ends
- robust unbreakable design with metal housing
- can be terminated in the field with standard assembly tool set for SC connectors
- strain relief by crimping, sealing by cable gland
- for cable diameter 4,5 - 6 mm resp. 8 mm without cable boot
- dimensions length without cable boot: 100 mm, \varnothing 27 mm



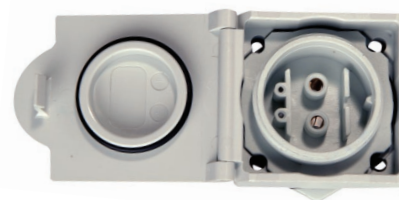
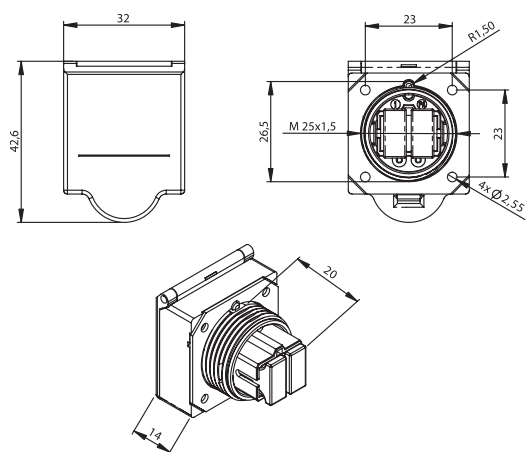
Order no.	Short name	Remarks
J08083A0000	Connector 2xSC IP67 for Multimode	for field assembly
J08083A0001	Connector 2xSC IP67 for Singlemode	for field assembly
J08083H0000	Hybrid connector 2xSC IP67 for Multimode incl. 2 electr. contact pins	for field assembly electrical connection AWG 22-24
J08083H0001	Hybrid Flange Mounting Outlet 2xSC IP67 for Singlemode incl. 2 electr. contact sockets	for field assembly electrical connection AWG 22-24

Note: Connector IP67 with Telegärtner-specific design

FO Flange Coupler 2xSC IP67 | 1.4.7

Performance Characteristics

- insertion loss with fibres 9/125: max. 0,5 dB
- insertion loss with fibres 50/125: max. 0,4 dB
- UV-resistant plastic, fire rating UL94 V0
- polarization-proof connector interface 2xSC with 2.5 mm ferrules and spacing as „SC-RJ“ (EN 50377-6-2)
- robust screw coupling with metal fixing nut
- protection class IP67 when not connected, with integrated protective swivel lid
- colour coding: Multimode = grey, Singlemode = blue
- coupler housing can be mounted in 4 x 90° positions
- 2x SC Simplex or 1x SC-RJ (IP20) can be internally plugged
- screw mounting with nut M25x1,5 (wall thickness < 5 mm), alternatively with screw (wall thickness > 5 mm)
- installation size dia. 25 mm with anti-twist device
- dimensions: W = 32,5 mm, H = 43 mm, D = 12 mm



Order no.	Short name	Remarks
J08084A0000	Flange Mounting Outlet 2xSC IP67 for Multimode	
J08084A0001	Flange Mounting Outlet 2xSC IP67 for Singlemode	
J08084H0000	Hybrid Flange Mounting Outlet 2xSC IP67 for Multimode incl. 2 electr. contact sockets	electrical connection AWG 22-24
J08084H0001	Hybrid Flange Mounting Outlet 2xSC IP67 for Singlemode incl. 2 electr. contact sockets	electrical connection AWG 22-24

1.4.8 RJ45 and FO Outlet IP66 Surface Mounting

The specification of a Terminal Outlet (TO) is based on ISO/IEC 24702, for installation of data outlets in areas subject to extreme ambient stresses due to temperature, dust, moisture or splashing water. The IP66 surface-mount housing from Telegärtner is used to connect devices or

complete automation islands; 2 FO or RJ45 outlets can be placed in the unbreakable housing (colour: RAL 7035, protection class IP66), allowing installation direct in manufacturing environments. Its compact size of 110x110x66 mm also permits space-saving installations.

Performance Characteristics

- degree of Protection IP66
- alternatively 1 or 2 connections with SC-Duplex adaptors or RJ45 modules/adaptors
- connection of 2x SC-Simplex or 1x SC-RJ connector resp. RJ45 IP67 or RJ45 IP20 plug
- hybrid assembly RJ45/FO possible
- M20 cable gland
- little space required for surface mounting, dimensions: 110x110x66 mm



Order no.	Short name	Remarks	Colour
H02050A0097	Surface mount housing IP66	without flange, without piercing	RAL 7035

To simplify enquiry and ordering procedures for IP66 surface-mount outlets, order specifications are available from Telegärtner as print masters or Excel tables. They can be used to produce any desired combination with RJ45 and/or FO inserts. These order specifications can be downloaded under the menu option „DataVoice/Service“ on our homepage www.telegaertner.com.



Order no.	Short name	Remarks
H01012A0050	Cable gland M20 x 1,5	incl. 2 inserts for cable diameter 7 - 10,5 mm and 9 - 13,5 mm

Order no.	Description
U01010A0004	Drilling hole and fixing cable gland M20 x 1,5 (without products)
U01010A0010	Punch hole and assembly for flange outlet 2x SC IP67 (without flange) ¹
U01010A0011	Punch hole and assembly for mounting flange RJ45 IP67 (without flange) ²

1) Flanges/modules/coupler see chapter „RJ45 Mounting Flanges IP67 for AMJ modules/coupler“

2) Flange adaptor see chapter „FO Flange adaptor 2xSC IP67“