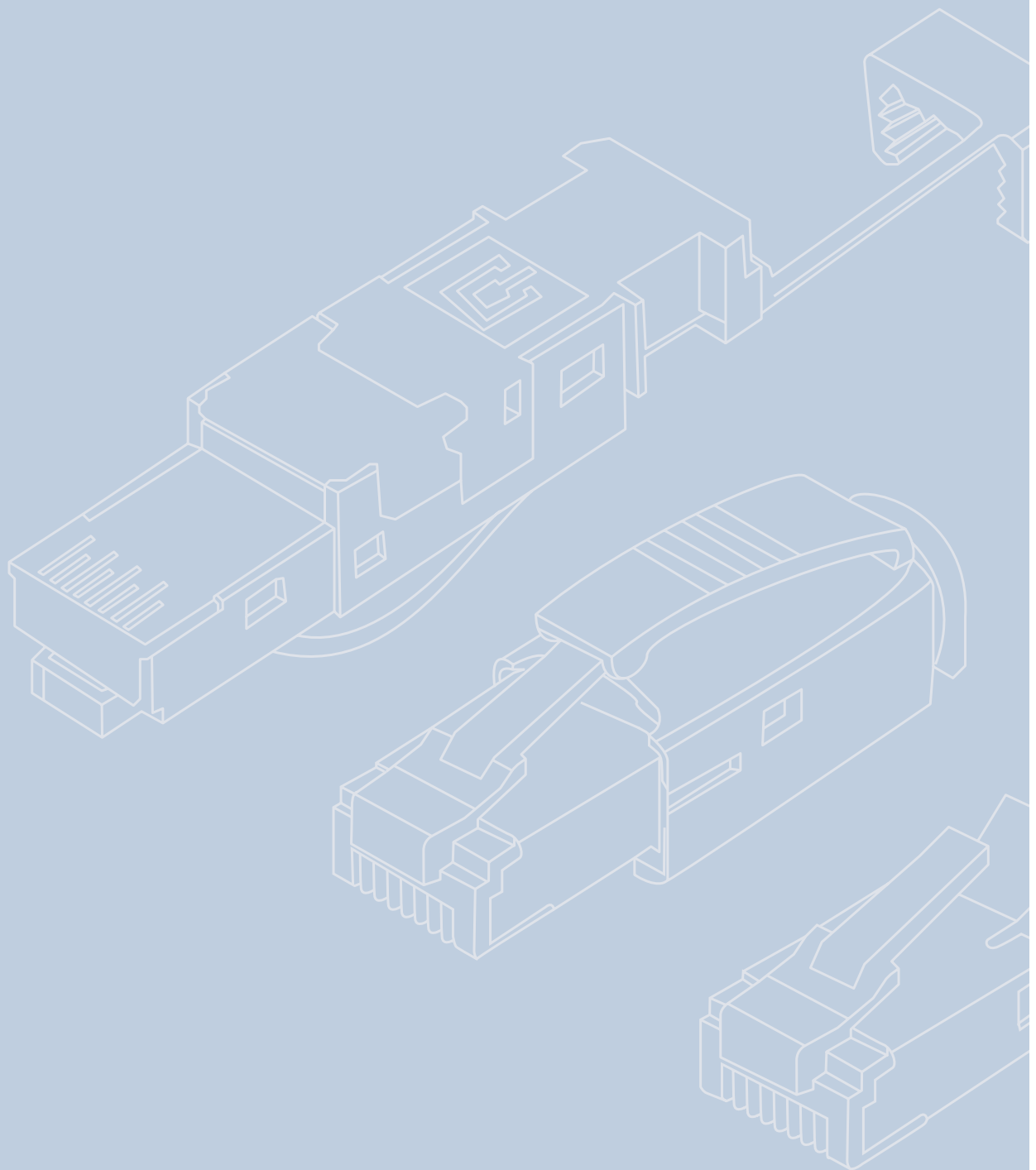
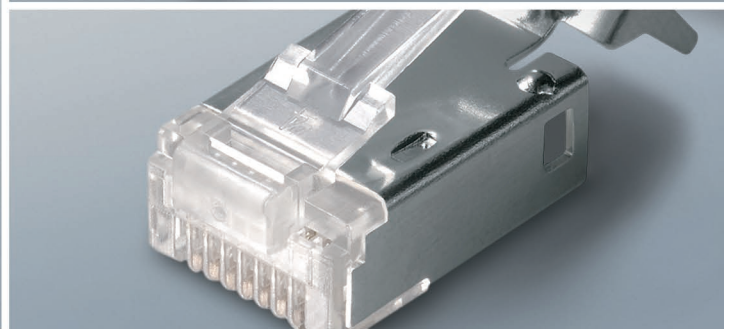
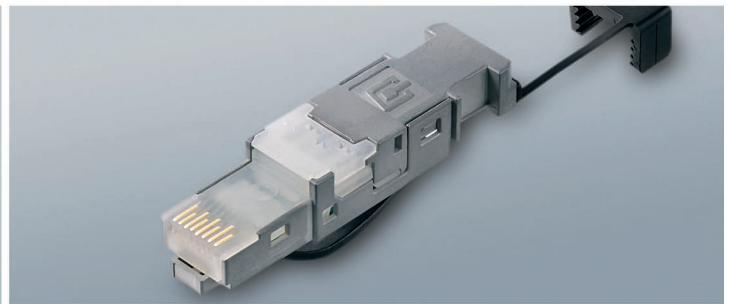
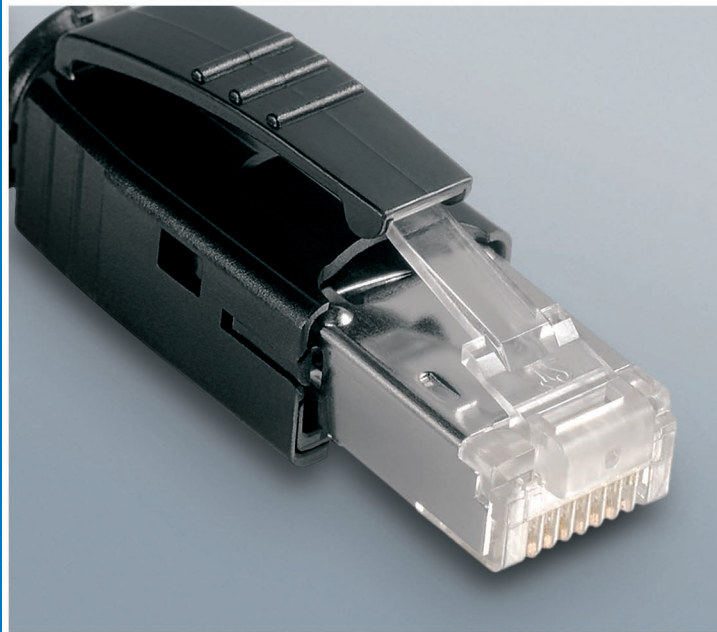


Light Duty RJ45 Plugs





2

Light Duty RJ45 Plugs

2.1	RJ45 Plugs	52
2.2	Cable Boots.....	52
2.3	Colour Coding	53

Light Duty RJ45 Plugs

2

The RJ45 connectors acc. to ISO/IEC 60603-7-5 are available in two designs. The 8-way Cat.6 connector for stranded wire cables AWG22-26 or solid wire cables AWG22-26 can easily be assembled on-site without any special tools. The maximum cable diameter is 8.5 mm. The connector features the EIA/TIA A, B and Profinet coding and a 360° shielding connection. The small and robust zinc die-cast housing can also be supplemented with a colour coding. The 8-way Cat.6 connector for stranded wire cables AWG24-27 and

solid wire cables AWG24-27 completes the product line. Assembled with a crimp tool it offers shield connection and a wire presorting for easy handling, too. The strain relief pressure is thereby absorbed by the cable jacket. This avoids deformation of wires. Retrofit, 2-part cable boots in different colours are available additionally. Both connectors are capable for use in patch panels, switches, etc. Suitable crimp tools for professional application round-off the product range.

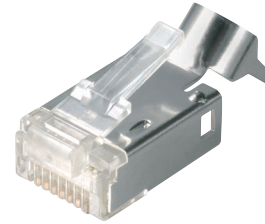
Technical Data		
	STX RJ45 Plug AWG22-26	STX RJ45 Plug AWG24-27
Mechanical Characteristics		
Insertion force	<100 N	< 100 N
Durability (mating cycles)	>750	> 750
Material: Contacts	CuSn	Phosphor Bronze
Material: Contact finish	0.75 µm AU to 2 µm Ni	Ni2.54Au0.8
Material: Connector Housing	zinc diecast	PC UL94 V0
Material: Insertion	PA	PC UL94 V0
Material: Cable boot	PA	PVC UL94 V0 (Ø 6.3 mm / Ø 7.0 mm); PA6 UL94 V0 (Ø 6.0 mm)
Mating Requirements Cu-Conductor diameter: solid	0.4 - 0.64 mm	0.36 - 0.51 mm (AWG27/1 - 24/1)
Mating Requirements Cu-Conductor diameter: stranded	0.48 - 0.76 mm	0.46 - 0.61 mm (AWG27/7 - 24/7)
Core Diameter	bis 1.6 mm	0.85 - 1.05 mm
Overall cable diameter	5.5 - 8.5 mm	5.5 - 7.3 mm
Material: Shielding housing	-	0.5 mm brass, 2 µm Ni
Crimp tool	tool-free assembly	N00001A0002
Climatic Characteristics		
Temperature range	-40° C...80° C	-40°C ... 80°C
Electrical Characteristics		
Contact resistance	<20 mΩ	< 20 mΩ
Insulation resistance	>500 MΩ	> 500 MΩ
Voltage proof: contact-contact	>1000 V	> 1000 V
Voltage proof: contact-shield	>1500 V	> 1500 V
Working current at 50° C	1 A	1 A
Standards		
	DIN EN 60603-7-5	DIN EN 60603-7-5

2

Light Duty RJ45 Plugs

2.1

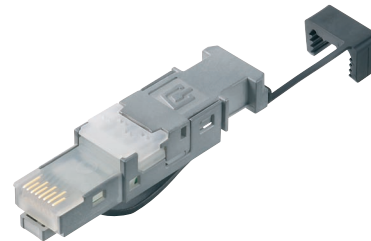
RJ45 Plugs



Order no.	Description	Solid/Stranded	Remarks
J80026A0000	STX IP20 RJ45 plug Cat.6	AWG24-27	without cable boot



Order no.	Description	Solid/Stranded	Remarks
J80026A0001	STX IP20 RJ45 plug Cat.6	AWG24-27	with cable boot (black)



Order no.	Description	Solid/Stranded	Remarks
J80026A0003	STX IP20 RJ45 plug Cat.6	AWG22-26	with colour coding black, field assembly

2.2

Cable Boots



Order no.	Description	Colour
H86011A0000	STX cable boot for STX IP20 RJ45 plug (J80026A0000)	white
H86011A0001	STX cable boot for STX IP20 RJ45 plug (J80026A0000)	grey
H86011A0002	STX cable boot for STX IP20 RJ45 plug (J80026A0000)	orange
H86011A0003	STX cable boot for STX IP20 RJ45 plug (J80026A0000)	blue
H86011A0004	STX cable boot for STX IP20 RJ45 plug (J80026A0000)	yellow
H86011A0005	STX cable boot for STX IP20 RJ45 plug (J80026A0000)	green
H86011A0006	STX cable boot for STX IP20 RJ45 plug (J80026A0000)	black

Light Duty RJ45 Plugs

2

Colour Coding

2.3



Order no.	Description	Remarks	Colour
B80111A0000	STX colour coding	for STX RJ45 plug AWG22-26 (J80026A0003), field assembly	white
B80111A0001	STX colour coding	for STX RJ45 plug AWG22-26 (J80026A0003), field assembly	grey
B80111A0002	STX colour coding	for STX RJ45 plug AWG22-26 (J80026A0003), field assembly	orange
B80111A0003	STX colour coding	for STX RJ45 plug AWG22-26 (J80026A0003), field assembly	blue
B80111A0004	STX colour coding	for STX RJ45 plug AWG22-26 (J80026A0003), field assembly	yellow
B80111A0005	STX colour coding	for STX RJ45 plug AWG22-26 (J80026A0003), field assembly	green

